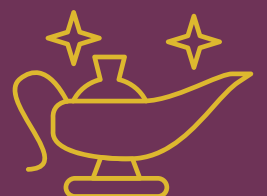


ALADDIN Pantomime Schools Pack 2024

**Mansfield
Palace
Theatre**



**www.mansfieldpalace.co.uk
01623 463133**

Booking information

Schools and groups tickets will go on sale from Tuesday 30 April 2024 at 10am. All bookings on this date will need to be placed by telephone via Box Office:

01623 463133

Phone lines will be very busy, bear with us and we will get you booked as quickly as possible. No bookings will be accepted via email or in person until 10am on Wednesday 1 May 2024.

Confirmation of your reservation will be sent to you by email along with terms and conditions. Terms and conditions should be signed and returned to the Box Office within 5 working days to secure your booking. Failure to send these back could result in your booking being cancelled and seats released back on sale.

School group prices:

Basic	£12.50
Ticket with ice cream*	£15

*The ice cream provided is a small tub of vanilla. We can accommodate dietary requirements if informed in advance. Requests on the day will not be available.

All teachers and parent helpers can attend for free, however tickets need to be reserved.

Non-school group prices:

Standard tickets (Gold Performances): £23.50

All prices include a booking fee.
Payment are to be made by BACS transfer.

Buses

FREEWAY
COACHES

Freeway Coaches are offering excellent rates for any school or group travelling to the theatre. Any school who is wanting coach travel to the pantomime will need to contact Freeway directly to book. Prices are as follows:

Within a 6 mile radius - £4 per person (minimum of 70)
Within a 6 mile radius - £5 per person (minimum of 50)
Within a 6-12 mile radius - £5.50 per person (minimum of 70)
Within a 6-12 mile radius - £6.50 per person (minimum of 50)

Once your tickets are booked, give the team at Freeway a call on **01773 811711**.



On the day of your visit

- Please arrive no later than 15 minutes before the show start time. The show will start promptly and lasts approximately 2hrs 30mins, including the interval.
- The interval is 20 minutes. If ordered, ice creams will be brought to your group with rubbish bags.
- At the end of the performance, our team will help you to exit safely and onto your coaches if you have them booked.
- The kiosk will be open before the show and during the interval with snacks, soft drinks and hot drinks available to purchase.
- Unfortunately, we do not sell any merchandise during schools performances.
- Please do not bring any single use plastic bottles to the performance. We encourage the use of reusable bottles to help the environment.

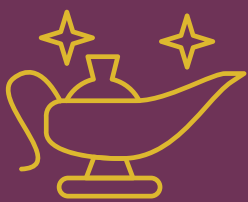
School workshops

Two hour workshops to accompany the production are available for Key Stages 1 and 2. They will be led a professional facilitator and focus on the story and theme of this classic children's tale. Participants will be encouraged to explore the characters and dramatise some of the key moments in the plot. They will be encouraged to use their imagination and creativity to bring the story to life and build confidence levels, aiding their key skills such as communicating and listening.

Contact Christopher Neil on **cneil@mansfield.gov.uk** to find out more, discuss multiple or whole school workshops and to book.

Any other questions?

If you have any questions about this year's panto, please give us a call on 01623 463133 or email palacetheatreboxoffice@mansfield.gov.uk and the team will be happy to help.



Performance schedule



Day	Date	Morning	Matinee	Evening
Saturday	23-Nov		2pm	7pm
Sunday	24-Nov		1pm	6pm
Monday	25-Nov	No performances		
Tuesday	26-Nov	10am	2pm	
Wednesday	27-Nov	10am	2pm	
Thursday	28-Nov	10am	2pm	
Friday	29-Nov	10am	2pm	
Saturday	30-Nov		2pm	7pm
Sunday	01-Dec		1pm	6pm
Monday	02-Dec	No performances		
Tuesday	03-Dec	10am	2pm	
Wednesday	04-Dec	10am	2pm	
Thursday	05-Dec	10am	2pm	
Friday	06-Dec	10am	2pm	
Saturday	07-Dec		2pm (S)	7pm
Sunday	08-Dec		1pm	6pm
Monday	09-Dec	No performances		
Tuesday	10-Dec	10am @	2pm	
Wednesday	11-Dec	10am	2pm	
Thursday	12-Dec	10am	2pm	
Friday	13-Dec	10am	2pm	
Saturday	14-Dec		2pm	7pm
Sunday	15-Dec		1pm	6pm
Monday	16-Dec	No performances		
Tuesday	17-Dec	10am	2pm	
Wednesday	18-Dec	No performances		
Thursday	19-Dec		2pm	7pm
Friday	20-Dec		2pm	7pm
Saturday	21-Dec		2pm	7pm
Sunday	22-Dec		1pm	6pm
Monday	23-Dec		2pm	7pm
Tuesday	24-Dec		11am	3pm
Wednesday	25-Dec	No performances		
Thursday	26-Dec		2pm	7pm
Friday	27-Dec		2pm	7pm
Saturday	28-Dec		2pm	7pm
Sunday	29-Dec		1pm	6pm
Monday	30-Dec		2pm	7pm
Tuesday	31-Dec		11am	3pm

Signed performance: Saturday 7 December, 2pm
Relaxed performance: Tuesday 10 December, 10am

School shows
Gold shows



Mansfield District Council
Cultural Services