



# Budget Consultation

2025-2026



We want your help to  
shape our budget

[www.mansfield.gov.uk/budgetconsultation](http://www.mansfield.gov.uk/budgetconsultation)



**Mansfield**  
District Council

# Contents



Introduction.....	3
About the survey.....	4
Recap from 2023.....	5
About the council.....	6
Our services.....	7
Did you know?.....	8
The accounts.....	10
How we are funded and spend money.....	11
Political governance.....	12
Council Tax.....	13
Have your say.....	14

# Introduction



In January 2025, Mansfield District Council will meet to agree its annual budget for 2025/2026.

In anticipation of this, we are undertaking an annual high-level review to understand what services are important to residents and alternatives to help bridge our anticipated shortfall in the budget.

We are asking residents, businesses and wider stakeholders for their views on proposals for the next financial year (2025-2026), with a specific focus on efficiencies and savings. This feedback will be used throughout the budget setting process, which will go through our Overview and Scrutiny Committee (Corporate) in the autumn, followed by approval by Full Council in early 2025.

We used your feedback and views from last year's consultation to shape this current financial year's savings. Some of your requests included scaling back our events programme, cutting gift in aid, and increasing our precept of Council Tax. Your views are so important in not only shaping how we deliver our services, but to ensure we provide what is important to you during these challenging financial times.

We are continuing to do all we can to mitigate and reduce pressures on our budget, whilst changing the way we deliver services to ensure they remain efficient for the months and years to come. This is why we are now annually asking for your views on our financial budget. It will not only shape our delivery but also ensure we have accurate and timely information yearly to deliver for you.

All local authorities are having to deal with large increases in inflation that are driving up costs and prices for energy, fuel and materials. The cost-of-living crisis means that we also have increased demand on our services. We must also budget for the pending pay awards and bad debt provision for potential unpaid commercial rent.

Across our Medium-Term Financial Strategy, 2024 – 2027, we have an anticipated shortfall of over £3 million. We must prioritise our services and focus on delivering what is needed. In order to get this right, we need to know what is important to the residents that we serve.

This consultation booklet sets out where our money comes from, how we currently spend it and links to a consultation exercise that suggests ways we could meet this budget gap. Now is your chance to help shape the future of our services.

We encourage you to read all the information before having your say.

**Adam Hill**

Chief Executive Officer, Mansfield District Council

**Andy Abrahams**

Executive Mayor, Mansfield District Council



# About the survey



The central part of the budget consultation is a survey for residents and businesses to give their opinion and feedback on what is important to them.

In the survey, you will be asked to prioritise what services are important to you. You will then be asked a series of questions regarding service changes, including the reduction and stopping of some services and activities.

## For example:

*We're asking people if they would support a reduction in maintaining our green spaces.*

*We'll also be asking about the town centre, community safety, waste and recycling, planning, revenues and benefits and Council Tax.*

The easiest way to complete the survey is online at [www.mansfield.gov.uk/budgetconsultation](https://www.mansfield.gov.uk/budgetconsultation).

Printed copies will be available through libraries and at the Civic Centre.

We can also provide alternative formats on request, including large print and translations. Please email [marketingandcommunications@mansfield.gov.uk](mailto:marketingandcommunications@mansfield.gov.uk)

The results of the survey will be available on our website in winter 2024, and will be used to inform the budget setting process.





# Recap from 2023

The council is required by law to set a balanced budget every financial year.

Last year, we ran a public consultation seeking comments on proposals to meet our 2023/24 balanced budget.

This is an exercise we plan to run in consultation with our communities yearly. It will be essential to pulse checking with our residents what their priorities are to ensure we are delivering what they want with accurate information.

The results from last year's survey helped to inform the 2023/2024 budget setting process. Some examples of what you said in the survey and what we did are below.

## **You said:**

Reduction in event spend

## **We did:**

Removed core funding from events and transferred to funded programme supported from Arts Council and Towns Funding allocations.

## **You said:**

Change grant in aid delivery

## **We did:**

Supported partner organisations to find new funding streams. Also offered alternative accommodation provisions to ensure continuity of services.

## **You said:**

Change business grants

## **We did:**

Reduced funding streams for businesses to apply to, instead referring to other funded schemes and support in place i.e. Mansfield Accelerator Project.

## **You said:**

Increase Council Tax

## **We did:**

The Mansfield precept of Council Tax was increased by 2.99% to bring in additional revenue, equating at around £5 extra per year for residents.

# About the council

Mansfield District Council provides a range of services to more than 110,000 residents, including emptying bins, park and green space maintenance, events, housing, environmental health, planning and design services, the theatre and museum, to name but a few.

The council has a vision for the district and the Towards 2030: A Strategy for Mansfield sets out five priorities to focus on.

## These priorities are:

-  **Our communities**  
**The ambition:** Our communities are supported to live safe, healthy and happy lives.
-  **Our organisation**  
**The ambition:** Our communities benefit from a resilient, financially sound and well run council working in partnership.
-  **Our district**  
**Our ambition:** Our communities are proud of the district and promote it as a great place to live, work and visit.
-  **Our environment**  
**Our ambition:** Our communities are protected and benefit from measures to tackle the impact of climate change.
-  **Our economy**  
**Our ambition:** Our communities benefit from employment opportunities, skills development and investment.

Dealing with uncertainty has been a consistent feature of the last few years, and we know it will be a feature of the future. We know it will face new challenges and will need to change to respond to those challenges.

This refreshed strategy therefore sets out how we will respond to those uncertainties and address the challenges we face both as a council and as a district. It sets out our renewed vision, ambitions and the priorities the council will focus on going forward.

The full strategy is available to view at [www.mansfield.gov.uk/strategy](http://www.mansfield.gov.uk/strategy).

## Our vision

To be an ambitious, caring and confident district where everyone can prosper



# Our services

Below are just some of the ways we used your money in the year 2023/24 to maintain and enhance the district for our 110,000 residents and thousands more visitors.

Some of the services Mansfield District Council provides include:



Over the last 12 months, the council has worked hard to find savings to support the Medium-Term Financial Plan. The council has made efficiencies through transformation and service redesign to save considerable money, but we need to go further, which will affect services.

We need your view on what changes you will support in the future.

# Did you know?

This budget consultation focuses on services Mansfield District Council directly delivers to residents, whether that be statutory or discretionary.

It is important for residents and businesses to understand that other agencies, including Nottinghamshire County Council, the community voluntary sector, and other business organisations deliver some services across the district.

**For example, the below services are provided by Nottinghamshire County Council:**



Road and pavement repairs; including street lights, pot holes and gritting



Children's centres



Libraries



Schools



Recycling centres



Care and support for vulnerable children and older people



Fostering and adoption



Trading standards

## Business Rates

Did you know that all businesses within our district have to pay business rates? The Valuation Office sets the charge levels and Mansfield District Council is obligated to collect them.

We all want to see a vibrant and thriving Mansfield with local businesses supported by increased footfall. However, these rates are a national government requirement.



## Partnership Work

We also work with various partners to best support our communities and the local economy. These include Mansfield and Ashfield Business Network, Mansfield BID, the Place Board, Mansfield CVS, and More Leisure Community Trust, to name but a few. Through our place-based partnerships, we also work closely with community groups such as the Mansfield Woodhouse Community Development Group, Vibrant Warsop, and the Friends Of groups to make real changes in the heart of communities. We also offer them support, grants and advice.



# Did you know?



Local authorities have two distinct types of funding streams available to them, revenue and capital. The main difference between the two is their focus and purpose:

## Revenue

- Cover day-to-day operational expenses and includes salaries and wages, running costs such as fuel, utility bills and service contract payments.
- Revenue expenditure is funded from revenue income sources such as council tax, charging users for services, government grants, housing rents, and fees and charges for particular services.

## Capital

- Funds long-term investments in physical assets, such as buildings, land, vehicles, plant and machinery, and infrastructure.
- Capital expenditure is funded from borrowing, capital grants, the proceeds of asset sales (capital receipts), and contributions from the revenue expenditure budget.

## External funding and grants

The council has been successful in recent years when applying for government grants and external funding opportunities such as the Arts Council England NPO status and UK Government regeneration funding.

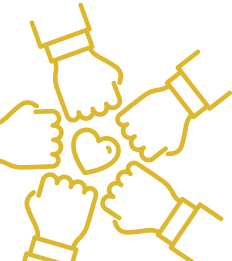


These grants do not support the day to day running of council services. They are ring-fenced for specific projects that have approved business plans accepted by the relevant funding bodies.

An example of how external capital funding can deliver General Fund savings to the council is the Mansfield Connect project. By moving into the former Beales building, it will not only transform how we deliver council services and put us in the heart of the town centre, it will reduce the current footprint for us. This means cheaper running costs and bills, which in turn, brings multiple efficiencies to how we serve our communities.

## Supporting the front line

A lot of the service areas mentioned within the consultation are supported by back-office services e.g. legal services, human resources, financial services, who support front line delivery. Any decision to reduce these front line services will need to be re-profiled and reduced accordingly to reflect any reduction in front line services.



# The accounts



The council has two pots of money that it draws down from to run the organisation. These are referred to as the General Fund and Housing Revenue Account (HRA).

## General Fund

Our General Fund is where we manage our financial activities for all services and sources of income, except our financial activities as a housing landlord.

Excluding activities as a housing landlord, the money from our General Fund can:

- Pay for the day-to-day running of our services
- Be set aside for capital expenditure

## Housing Revenue Account

The HRA is the financial account of the council as landlord. It is ring-fenced in law for income and expenditure in respect of council housing and housing land and certain activities in connection with the provision of council housing only.

Our money goes on delivering services to our tenants and improving our council housing stock and estates in Mansfield.

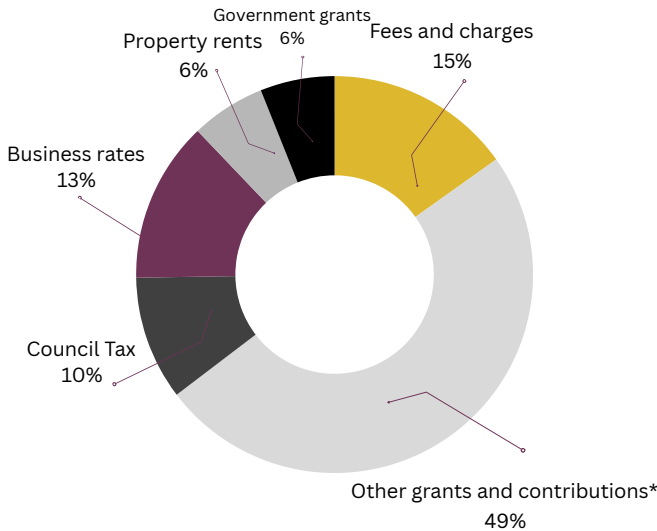
Due to the ring-fence, it is illegal for the council to subsidise any general fund activity from its HRA and vice versa.

Unlike central government, we have very little scope to raise other taxes or generate other sources of income. We cannot borrow money to finance day-to-day spending. We use our revenue budget to meet the cost of day-to-day spending such as salaries, supplies and services.



# How we are funded

In 2023/2024, 49 percent of the district council's funding for services came directly from other grant contributions, with the rest coming from fees and charges, business rates and Council Tax.

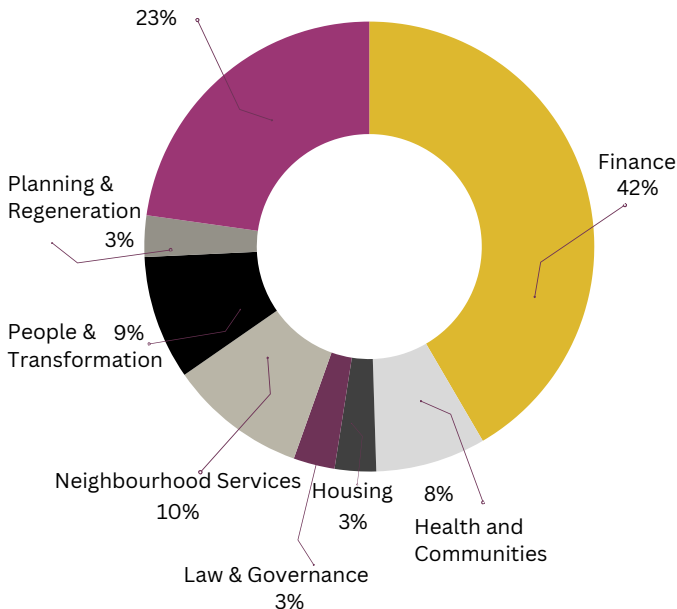


\*The council owns a number of assets outside the district. These are used to generate income to support the delivery of services

# How we spend our budget

In 2023/2024, the council spent most of its budget on finance, followed by the Housing Revenue Account (HRA) and Neighbourhood Services. The table on the right explains what services are provided under these service areas.

Housing Revenue Account



<b>Planning &amp; Regeneration</b>	Planning policy, regeneration, development management, design services, land charges
<b>Finance</b>	Revenues and benefits, financial services and property services
<b>Health &amp; Communities</b>	Community safety, licensing, environmental health, cultural services, leisure
<b>People &amp; Transformation</b>	Business transformation, human resources, ICT, marketing and communications, customer services, facilities management
<b>Neighbourhood Services</b>	Waste and recycling, parks and street cleansing, town centre and market, cemeteries and crematorium, fleet
<b>Law &amp; Governance</b>	Internal audit, elections, democratic services, health and safety, legal services, procurement
<b>Housing</b>	Housing needs, private sector housing, homelessness prevention

# Political governance

Mansfield District has one elected Mayor and 36 district councillors.

Each of these councillors receives an annual member allowance, members with additional responsibilities such as Portfolio Holders will received an additional allowance, and ward allowances.

These amounts are calculated and recommended to council by an independent body.

	<b>Member Allowance</b>	<b>Additional Responsibility</b>	<b>Ward Allowance</b>
<b>Mayor</b>	£6,385.95	£49,377.04	£750
<b>Deputy Mayor</b>	£6,385.95	£16,691.88	£750
<b>Portfolio Holder</b>	£6,385.95	£13,827.83	£750
<b>Overview &amp; Scrutiny Committee Chair</b>	£6,385.95	£6,920.95	£750
<b>Planning Applications Committee Chair</b>	£6,385.95	£9,587.85	£750
<b>Licensing Committee Chair</b>	£6,385.95	£7,505.10	£750
<b>Governance &amp; Standards Chair</b>	£6,385.95	£4,937.00	£750
<b>Leader of the main opposition group</b>	£6,385.95	£988.45	£750
<b>Group Leaders*</b>	£6,385.95	£319.59	£750
<b>Chair of the Council</b>	£6,385.95	£2,586.19	£750
<b>Vice-Chair of the Council</b>	£6,385.95	£1,065.30	£750

## Annual Totals

£229,894.20\*

\*Includes all 36 councillors

£113,807.18

£27,000\*

Approved allowance for 25/26

\*Includes all 36 councillors

**TOTAL £370,701.38**

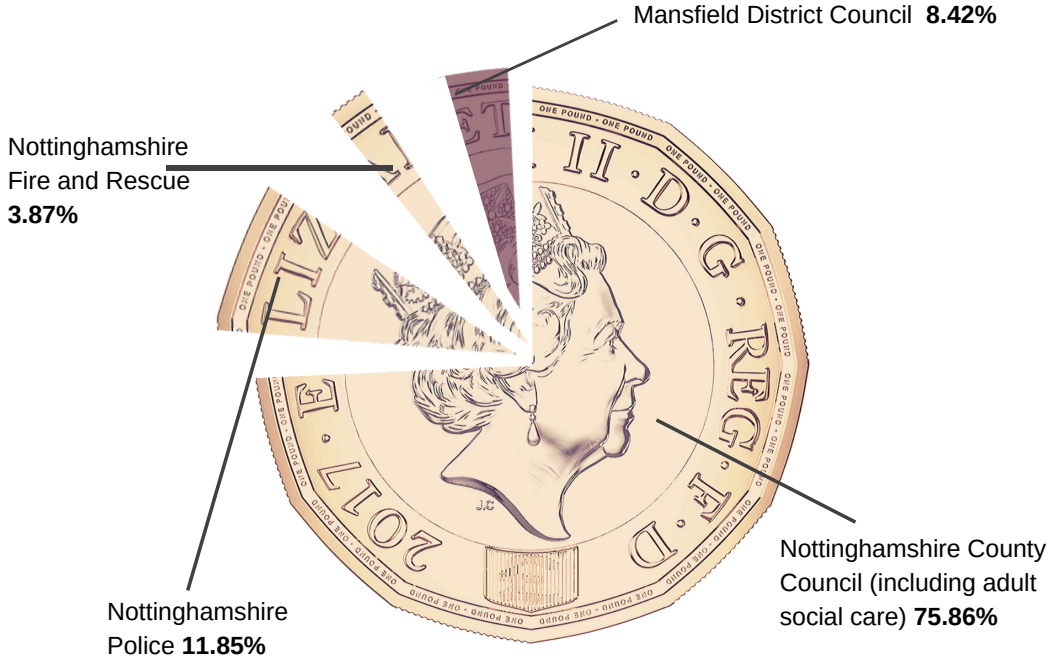
\*Based upon the number of members in the group



# Council Tax

Mansfield District Council collects Council Tax on behalf of other authorities. Below is the percentage breakdown for each one.

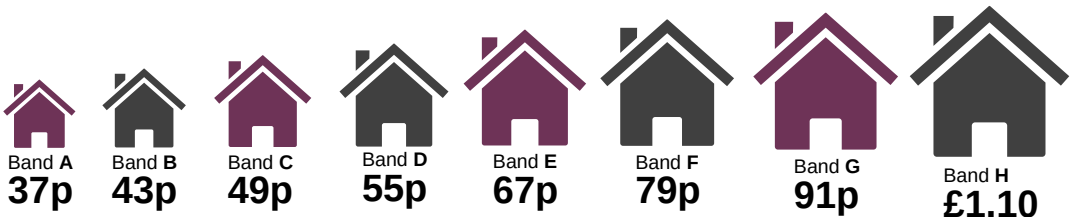
Totals are for the 2023/2024 financial year.



Residents living in Warsop will pay approximately 1.48% additionally to the Parish Council.

The Government has traditionally set a maximum limit for Council Tax increases that can be introduced without holding a referendum. Last year this limit was 2.99%, the equivalent of a £5 annual increase for a Band D Council Tax payer.

## What you pay towards Mansfield District Council services, per day



\*These figures are rounded to the nearest 1p.

# Have your say



By taking part in this survey you will be able to tell us about what services are important. The outcomes will help to determine what service reductions could be implemented in future years.

You can have your say between 16 September 2024 and 6 October 2024 by visiting and completing the online survey at [www.mansfield.gov.uk/budgetconsultation](http://www.mansfield.gov.uk/budgetconsultation)

The outcomes of this consultation will be considered by the council's Cabinet and Overview and Scrutiny Committee (Corporate) in November. This will help to inform the budget setting process before it is presented to Full Council for approval in January 2025.



**Sign Up**

For regular news and updates from across the district, sign up to My Mansfield Newsletter at [www.mansfield.gov.uk](http://www.mansfield.gov.uk). Or, join us on the My Mansfield Facebook page to get the latest information direct to your mobile.



[www.mansfield.gov.uk](http://www.mansfield.gov.uk)



**Mansfield**  
District Council