

Climate Change: Strategy and Delivery Plan



Mansfield
District Council



Contents

Foreword	2
Purpose of the Climate Change Strategy	3
Principles	6
Case for action	7
National response	9
Regional response	10
County response	10
Local response	11
What we have done so far	14
Regional emissions	16
District emissions	17
Organisational emissions	22
Themes and priorities	24
Partnerships	31
Communication and engagement	32
Funding	33
Governance and accountability	34
Monitoring and evaluation	36



Foreword

Climate change, and its impact on the world we live in, is one of the most significant issues facing us all today and the human effects on global warming are well publicised.

A reversal of these negative effects upon our planet requires a global effort. Global change can only happen if individuals and communities are prepared to change and have the opportunity to change.

Whilst Mansfield District Council (MDC) acknowledges the very real threat that climate change poses to our planet and more importantly to our organisation, district and communities, we also recognise the potential social, environmental and economic opportunities that managing climate change can bring.

The council has therefore pledged to take action to mitigate and reduce harmful emissions produced across the organisation and district and take steps to adapt to reduce the impact of climate change.

Delivering a successful management plan requires the council to be realistic in our ambitions, creative in our approach and bold in our decision-making - a challenge we are ready and willing to take on.



Purpose of the strategy and plan

This strategy and plan sets out Mansfield's ambitions to embrace the challenges and opportunities that climate change will bring. It acknowledges the severity and magnitude of this issue on the planet and the impacts this is likely to have across the world. However, the main aim is to address this global issue at a local level in a way which benefits local people, the economy and environment.

The plan will address:



The definition of carbon neutrality



Carbon neutrality (having a net zero carbon footprint) refers to achieving net zero emissions by minimising and balancing the amount of carbon released with an equivalent amount of sequestered or offset.



Climate mitigation



These are the actions we can take to minimise or cease harmful emissions caused by human behaviour which damages the environment.



Climate adaptation



This is adapting how and where we live to the actual or expected impacts of climate change and extreme weather events.



Carbon sequestration



This is how we can utilise technology and out natural resources to help capture atmospheric carbon dioxide and other forms of carbon, and store them long term to either mitigate or defer global warming.



Carbon offsetting

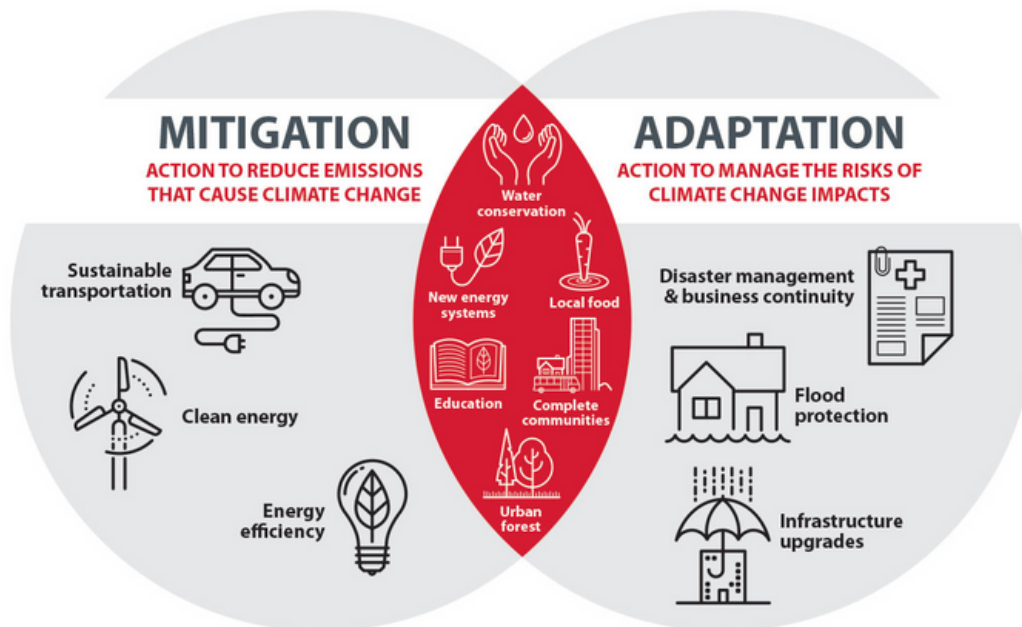


This is buying carbon credits equivalent to the amount of carbon you emit, to ensure your overall impact on the environment is 'net zero'. This will only be used by MDC as a last resort.






Purpose of the strategy

Mansfield District Council aims to take a proactive approach to climate change mitigation and resilience, recognising that the district must take action to curb carbon and other greenhouse gas emissions and prepare for the inevitable impacts of climate change.



Tackling the impacts of climate change is not something that the council can do alone. It requires the commitment of every organisation, business, community and citizen of Mansfield and requires, in some cases, fundamental change around the way we live our lives and the choices we make. Key stakeholders outside of the district will also be influential in enabling us to meet our aims, most notably Nottinghamshire County Council.

This strategy will therefore serve as:

-  An evidence base, setting out how our climate is changing and the challenges and opportunities we face.
-  A policy document, outlining our ambitions for tackling climate change in Mansfield.
-  A framework through which partners across the district can work together to reduce greenhouse gas (GHG) emissions and address the challenges that climate change brings.

The strategy identifies seven strategic priorities and ambitions (referred to as themes) for responding to climate change in Mansfield, as shown overleaf...

Purpose of the strategy

Figure 1: Themes and ambitions

Business and economy

To support and influence the transition to a green growth economy through leadership, innovation and technology.

Energy generation

To enable and support renewable energy generation with a focus on low carbon energy options to residents and businesses.

Waste and circular economy

To enable and encourage innovative approaches to reduce waste and increase reuse, recycling and repair rates.

Travel and transport

To enable and support the reduction in transport related carbon emissions focusing on the development of an active transport system.

Buildings and infrastructure

To enable and support the reduction in carbon emissions associated with the built environment including low carbon, low cost, healthy homes.

Carbon neutral council

Achieve a net zero carbon council that leads by example in promoting sustainable practices across our operations, estates and vehicles.

Natural environment

To enhance and protect the natural environment to support carbon sequestration and climate resilience.



Principles

MDC's Climate Change Strategy will:






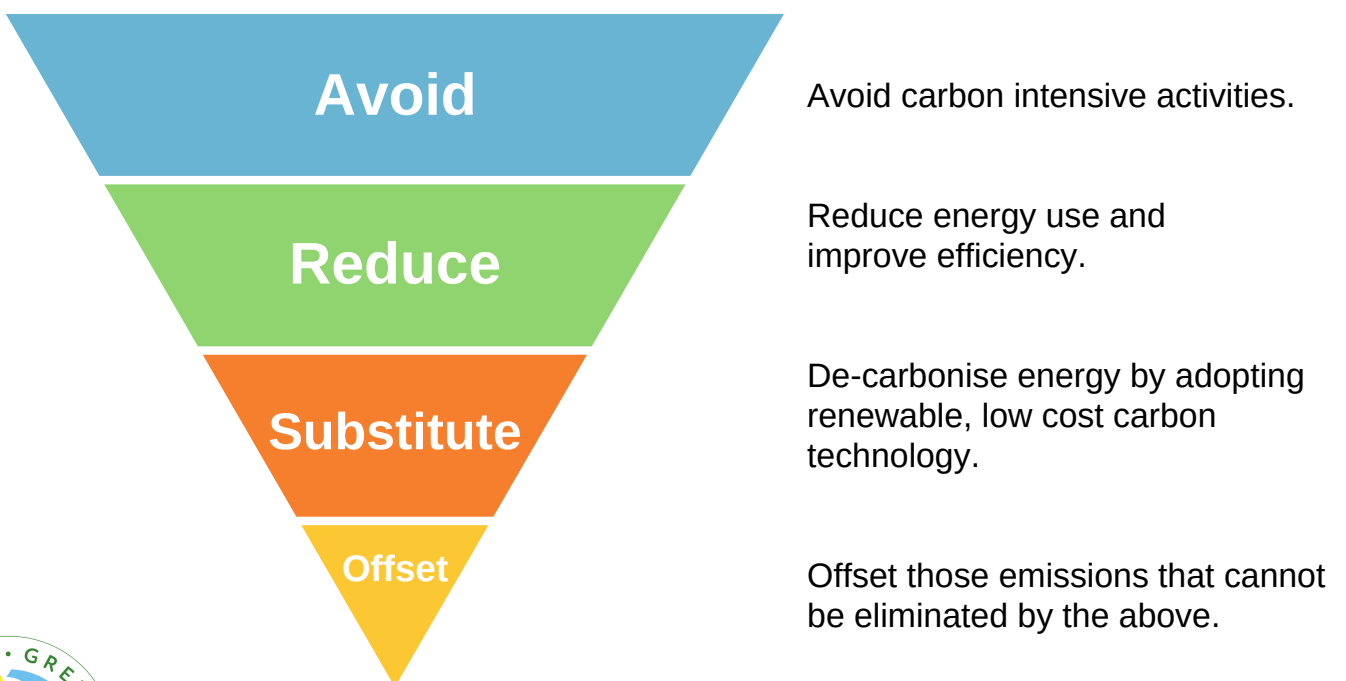
-  Deliver co-benefits - many actions to reduce emissions can deliver multiple benefits for our communities such as reducing congestion, improving air quality and improved health and economic growth. Actions that deliver co-benefits will be prioritised.
-  Be equitable - ensuring the transition to a low carbon, climate resilient future is fair and does not adversely impact on certain individuals and communities.
-  Be data driven and evidenced based - using the best available data and analysis, while working to increase knowledge in areas where there are gaps.
-  Embed climate considerations in its decision making - ensuring a transparent recording of how climate change and the ecological emergency is considered across the whole authority.
-  Follow the principles of the Carbon Management Hierarchy (see below), which provides a framework for how the council and its partners will approach meeting their emissions targets.

Figure 2: Carbon Management Hierarchy



Case for action

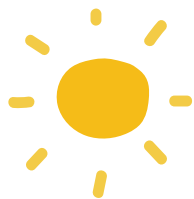
Climate change due to human influences is acknowledged as a threat to life. Globally, the planet is one degree warmer than before the industrial revolution and this is already causing significant climate impacts. UK Climate Projections (UKCP) from the Met Office suggest that without any action we are heading for a 4°C rise in global mean surface temperature. This high emissions scenario (following current levels of emissions growth) is projected to cause disruptive changes to our weather patterns and sea levels in the UK and have even more serious consequences internationally.

High emissions scenario - by 2070 we will expect:



Summer temperature +3.7 to 6.8C

Winters warmer +1.9 to 3.3C



Summers drier

More frequent hot spells

Soil moisture decreases



Winter - increase in frequency and intensity of wet days

Summer - increase intensity of rainfall.

Predicted changes in the UK.

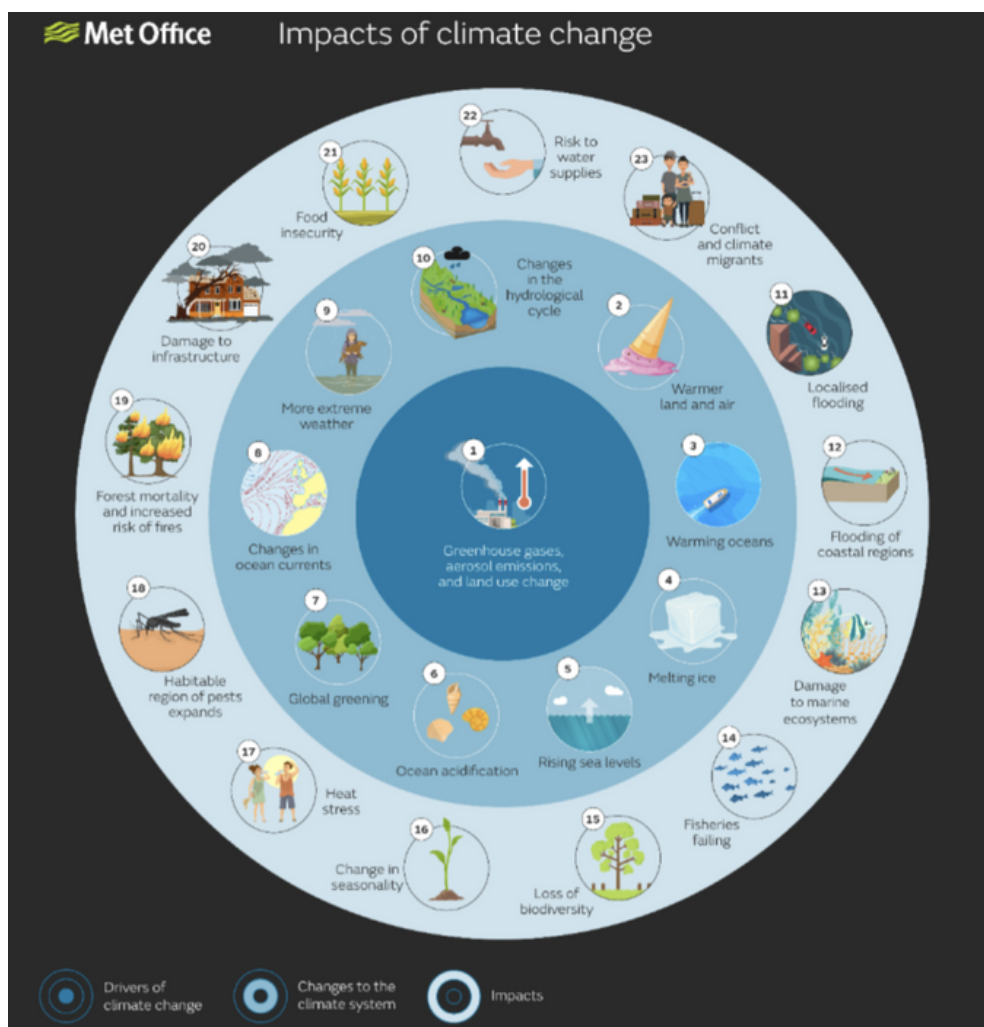
Data source: UKCP Global Low Emissions Scenario (RCP2.6)
and UKCP Headline Findings (2019)

The United Nations and the international scientific community have made clear the potentially severe global human, environmental and economic impacts that manmade climate change poses. The Paris Climate Agreement of 2015 recognised the need to accelerate actions and investment to combat climate change and pursue efforts to limit the future global temperature increase to 1.5°C.



Case for action

Climate change due to human influences is acknowledged as a threat to life. Globally, the planet is one degree warmer than before the industrial revolution and this is already causing significant climate impacts. UK Climate Projections (UKCP) from the Met Office suggest that without any action we are heading for a 4°C rise in global mean surface temperature. This high emissions scenario (following current levels of emissions growth) is projected to cause disruptive changes to our weather patterns and sea levels in the UK and have even more serious consequences internationally. The diagram below illustrates some of the drivers of climate change and the impacts they could have on the climate system globally and locally.



The effects of climate change are already being felt and are having an impact upon us, not just on our natural environment but also on the way we live and our social and economic wellbeing. The parts of the population most at risk are the marginalised, disadvantaged and vulnerable.

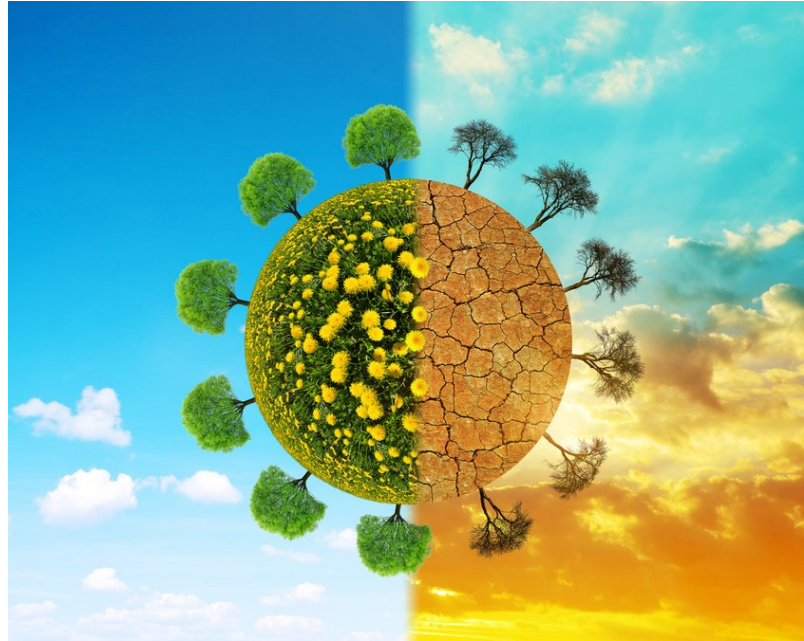


National response

According to the most recent report from the UK Committee on Climate Change (CCC Sixth Carbon Budget Report, December 2020) we still have the opportunity to turn the situation around and it is both achievable and affordable.

Until recently, the national target for the UK's greenhouse gas emissions was an 80% reduction compared to the 1990 baseline to be achieved by 2050, a legally binding target established by the 2008 Climate Change Act.

Intermediate targets had also been set with a 34% reduction to be achieved by 2020 and a 50% reduction by 2027. Progress to date has been significant with UK emissions 44% below 1990 levels in 2018. However, in June 2019, following the advice of the CCC12, the UK government pledged for the UK to become carbon neutral by 2050.






In 2020, the UK Government published its Ten Point Plan for a Green Industrial Revolution which sets out intentions for the economic recovery post Covid-19, and puts supporting green jobs and the net zero carbon goal at its centre.

In October 2021, the Government released its landmark and long awaited Net Zero Strategy: Building Back Greener. The Strategy can be accessed [HERE](#).

The strategy presents the government's overarching plan not only for how the UK will decarbonise by 2050, but also how it will achieve a 68% cut in emissions by 2030 - as part of a commitment made under the Paris Agreement - and a 78% cut by 2035 under the Sixth Carbon Budget.




The strategy also sets out what the Government expects from local government in responding to the challenges, including:

-  Leading by example.
-  Monitoring and setting targets to reduce emissions and achieve net zero.
-  Reporting on progress.



Regional response

D2N2, the Local Enterprise Partnership for Derbyshire and Nottinghamshire, sets out the challenge of climate change and their ambition to lead the most ambitious carbon turnaround in the country, by focusing on the following priorities:

-  Low carbon leadership - making the most of our natural and human assets to reduce carbon.
-  Enabling key low carbon sites - making the most of our industrial assets such as our other power station sites to foster green innovation, jobs, skills and energy production.
-  Decarbonising growth - promoting sectors such as modular housing and alternative fuels and working with high carbon sectors like minerals to help them innovate for low carbon.

County response

Nottinghamshire County Council takes the threat of climate change seriously. Their commitment as an organisation to become carbon neutral by 2030 shows they have a plan in place to protect our climate.

They were already working towards carbon neutrality in their buildings, but their declaration provided a clear signal of their commitment to Nottinghamshire's environment.

The year 2030 might seem a long way off, but they are putting in place the building blocks now to make sure they hit their carbon emissions target.

**"Carbon neutrality
is an opportunity
we can't miss"**



Local response

In response to the overwhelming evidence and growing concern, Councillors agreed to declare a Climate Emergency for Mansfield. The declaration aspires to:



Reduce carbon emissions by 40% by 2030



Make Mansfield carbon neutral by 2040.

Mansfield District Council recognise that whilst there are considerable financial challenges associated with reaching our carbon neutral target by 2040, the benefits of taking action significantly outweigh the costs over time.

Figure 3: Benefits of actions taken to tackle climate change

Environmental:

- Reduced flood risk (coastal, pluvial and fluvial)
- Improved access to greenspace and nature
- Improved and enhanced biodiversity and habitats
- Improved land management
- Cleaner air
- Cleaner water
- Greater water security
- Carbon sequestration in all habitats
- Less waste/less resource use
- Reduced/reverse species decline.

Social:

- Improved air quality
- Lower living costs
- More active, outdoor lifestyles
- Healthier diets
- Fuel poverty alleviated
- Less demand on health services
- Improved mental health
- Fewer work and school days missed
- Less premature deaths
- Warmer, healthier homes
- Quieter, safer streets
- Improved community cohesion
- Better work/life balance
- Less waste.

Economic:

- Clean and inclusive growth in the local economy
- Low carbon technologies
- High quality employment
- Improved productivity
- Diversification to more sustainable markets
- Reduced heat and energy costs
- Increased energy security
- Reduced imported fuels and materials
- Reduced congestion
- Reduced costs from food and extreme events
- Reduced waste.



Local response

The council also recognise that the benefits outlined in Figure 3 will help us to achieve our vision, ambitions and priorities for transforming Mansfield district as set out in our *Making Mansfield Towards 2030* strategy.

Our vision for the district is to 'grow an ambitious, vibrant and confident place' and our overarching strategy focuses on four cross-cutting themes:



Our Climate Change Strategy and Delivery Plan has therefore been developed in response to the declaration of a climate emergency and the realisation of the potential co-benefits that tackling climate change can have on the district, its communities and individuals.

Whilst the declaration focuses on reducing carbon emissions, CO₂ is not the only greenhouse gas (GHG). It is, however, the main cause of human climate change. Other greenhouse gases – such as methane (CH₄) and nitrous oxide (N₂O) – also contribute to climate change. If we reduce emissions of these then this also helps reduce the total warming.

The more we can reduce these other emissions then the more CO₂ can be emitted, or conversely, the more we emit of other greenhouse gases, the more our CO₂ emissions have to be cut.

MDC will therefore pursue efforts to influence and reduce all greenhouse gas emissions and our Delivery Plan has been developed to set out the specific actions we will take to mitigate and reduce all emissions.

Even with strong action now and in the future to reduce emissions, past and present emissions mean that climate change is inevitable and will increasingly impact on our residents - particularly those that are most vulnerable.

We will therefore manage the risks of climate change impacts (adaptation) through the use of planning policies and regulatory powers.



Local response






MDC is already taking a range of other actions to help council services, residents and businesses to adapt to the impacts of climate change, including:

- Addressing food poverty and fuel poverty in our most deprived areas by supporting food banks, food share initiatives and fuel banks.
- Promoting sustainable food growth through the increase of allotments, community gardens and orchards across the district.

The natural environment in relation to the climate is crucial for its ability to absorb greenhouse gases and its potential for helping to adapt and be resilient to climate change. We have therefore also taken steps to increase natural habitats and encourage biodiversity.

The Delivery Plan sets out further actions to manage the risks of climate change impacts (adaptation).

The strategy outlines the levers of influence Mansfield District Council will use to have a much wider impact, including:

-  Direct control/action over council operations and assets to become a carbon neutral council by 2040.
-  Place shaping – using the council's policy and regulatory powers including Planning Policy, Licensing and Environmental Health regulations to require particular standards are met, to influence the reduction of carbon emissions.
-  Cooperation and collaboration – working closely to encourage and support businesses, organisations and residents to take action to reduce their own carbon emissions.
-  Enabling and engaging – inspiring action and providing advice, information, education and training.
-  Influencing and lobbying – seeking to influence policy and funding decisions by national government and local partners, and to encourage organisations and groups to join forces to make a stronger case to government and others.



What we have done so far

Whilst the onset of the Covid-19 pandemic has had an impact on progress in developing a delivery plan, we have not stood still and since the declaration of the climate emergency have taken several positive steps to reduce carbon emissions and address the challenges of climate change, including:

Strategy:

- Drafted a Climate Change Strategy and Delivery Plan.
- Commitment to prepare a Supplementary Planning Document on low carbon technologies and sustainable design.
- Prepared draft planning guidance with other Nottinghamshire authorities.
- Commitment to prepare Green Infrastructure and Biodiversity Supplementary Planning Document.
- Commitment to prepare an Air Quality Supplementary Planning Document.
- Adopted Local Plan policies in determining current and future planning applications.
- Adopted an Open Space Assessment.
- Publication of Mansfield Green Space Standard.
- Adopted Green Infrastructure Study .
- Publication of Central Area Flood Risk Review.
- Air Quality Plan.
- Sustainability Officer Post created to lead on the climate change emergency and low carbon activities.

Urban Greening Project:

- £1million awarded to provide green space, pocket parks and improved lighting within Mansfield town centre.
- Smaller projects will be installed Autumn 2021.
- Larger projects will follow in Spring 2022 .
- Projects will include planting of trees, shrubs and pollution absorbing plants.
- Five sites have been identified: Old Town Hall car park, Quaker Way, Walkden Street concourse, Walkden Street pocket park and Stockwell Gate bridges.



What we have done so far

Green Rewards:

- Introduced the Green Rewards scheme in collaboration with other Nottinghamshire authorities.
- Residents will log their 'carbon credits' and the monthly winning resident will receive a prize in the form of a voucher to spend at a local business
- The scheme aims to raise awareness and drive positive behaviours.
- To be launched ahead of COP26.

Housing:

- Green Homes Grants - Phase 1A improving 51 properties due to finish shortly.
- Phase 1B – 22 properties signed up in Pleasley and Ladybrook.
- Planning approved March 2021 for first Passivhaus scheme in the district for 4 dwellings at Saundby Avenue.
- HRA programme includes new development of 99 homes built to Future Homes Standards.

Parks and Open Spaces:

- Working with the Sherwood Forest Trust as part of their Urban Greening Project and have identified 3 sites.
- 12 potential sites have been identified across the district for new tree planting
- Bee Kind campaign saw a shift away from bedding displays in the town centre to wildflower planters to encourage bees.
- Allotments - 70 half plots have been cleared ready for leasing since March 2020.
- 100 fruit trees were planted in early 2021 at Berry Hill Park Community Orchard
- Electric horticultural machinery has been trialled.
- Moved away from seasonal bedding plants.
- Increased the number of wildflower meadows to further encourage biodiversity.
- Increasing the number of allotment plots available and supporting community gardening projects.
- Purchased 4 electric vehicles.



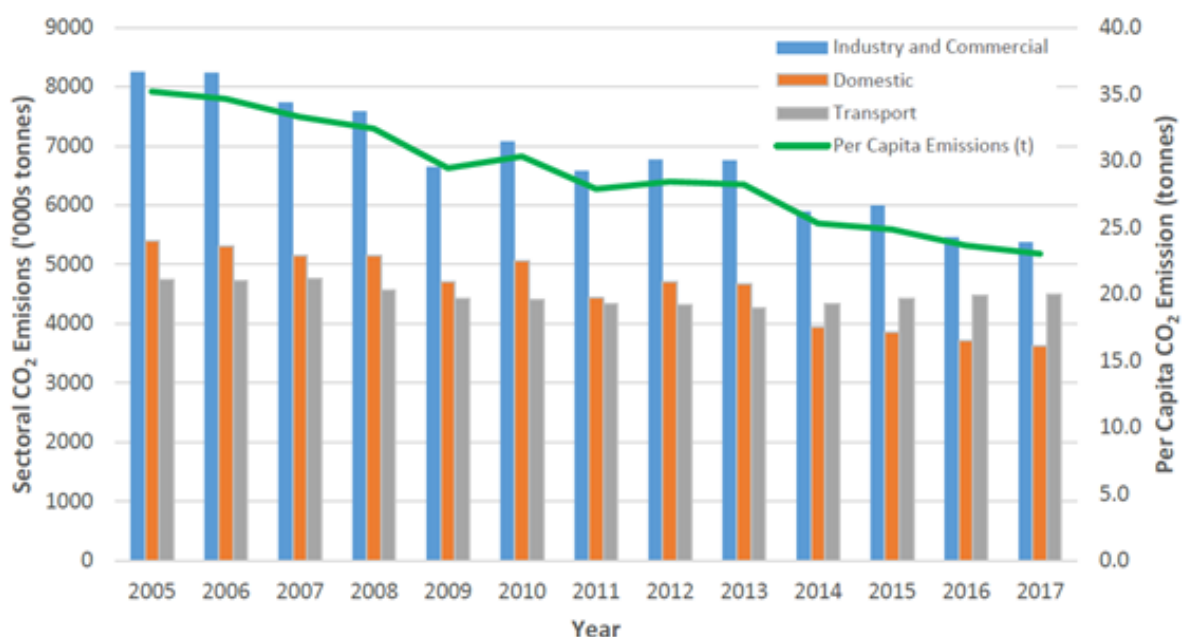
Regional emissions

"Total Carbon Dioxide emissions from direct and indirect energy use across the D2N2 area in 2017 were 13.5 MtCO₂, a 26.6% reduction from 2005 - 3.8% share of UK CO₂ emissions"

The sectoral emissions mix demonstrates that the largest emitting sector is Industry and Commercial (40%), followed by Transport (33%) and Domestic (27%) sectors. Whilst the Industry and Commercial sector contributes the most to D2N2's emissions, it has seen considerable progress in emission reductions since 2005: contributing 58.7% of the total overall emissions reduction, compared to the Domestic sector's contribution of 36% and Transport just 5.3% to the overall reduction.

D2N2's population has increased by 6% (as in all authorities since 2009); with the largest increases seen in Nottingham (12.3%) and South Derbyshire (12.3%). Per capita, emissions have reduced by 32% to 6.1 tonnes of CO₂ in 2017, when taking this population increase into account.

Figure 4:
Total Carbon Dioxide emissions from direct and indirect energy use in D2N2



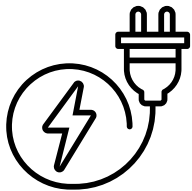
District emissions

As shown below, the carbon emissions estimates produced by the Department for Business, Energy and Industrial Strategy (BEIS) suggest that the three main sources of emissions in 2019 in Mansfield were:



.. ..

22% energy consumption from industrial and commercial properties (including businesses and public sector bodies such as councils, health and other education bodies).

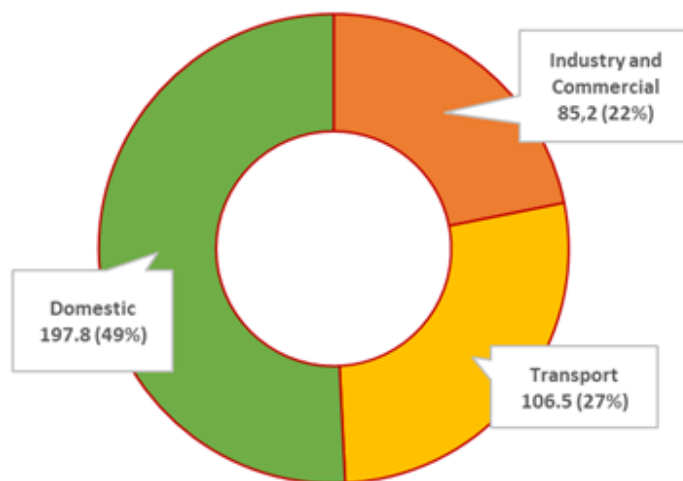


51% domestic sources (primarily heating, lighting and appliances in homes).



27% emissions from transport (including cars and other private vehicles, goods traffic and public transport).

Figure 5: Emissions by source



Source. Department for Business, Energy and Industrial Strategy (BEIS), 2020, UK local authority and regional carbon dioxide emissions national statistics: 2005 to 2019.

District emissions

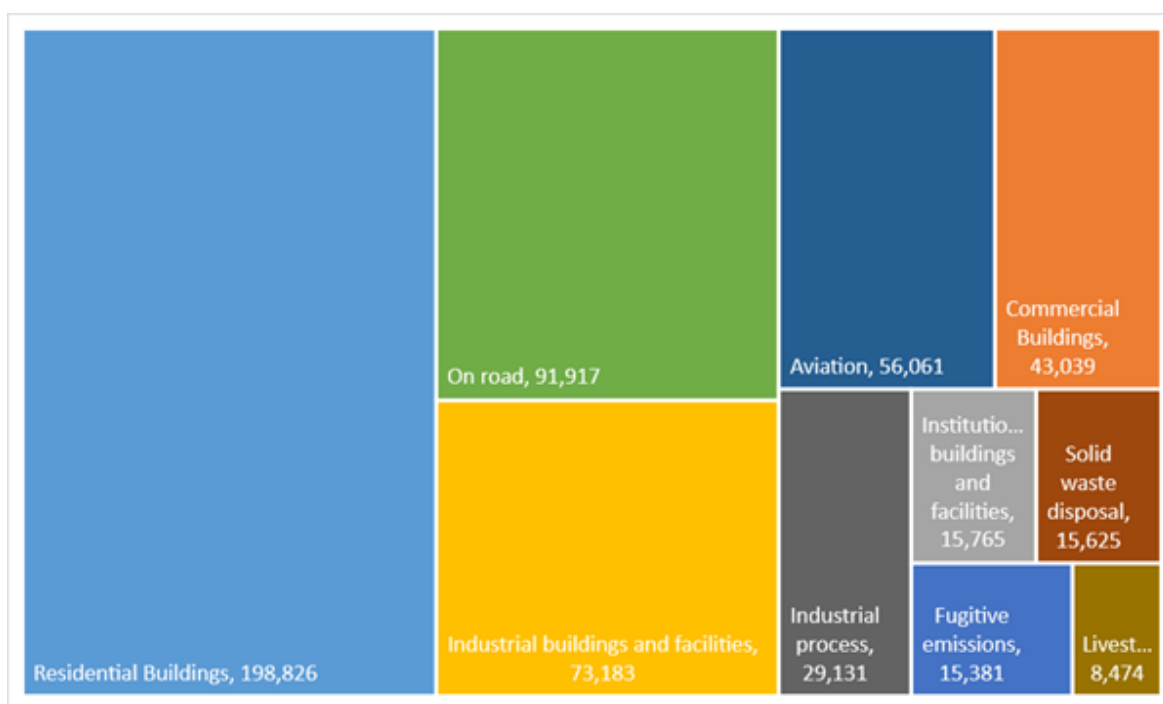
We have also used the SCATTER tool (*Setting City Area Targets and Trajectories for Emissions Reduction*) to provide a more detailed breakdown of emissions by different sub-sectors in Mansfield district.

SCATTER was developed by BEIS, Nottingham City Council, the Greater Manchester Combined Authority and the Tyndall Centre for Climate Research at the University of Manchester and Anthesis Group. It generates a local greenhouse gas emissions inventory following the Global Protocol for city-wide greenhouse gas emissions. For more information, please see: <https://scattercities.com>

The data is slightly different to the BEIS data presented above, because it includes emissions from sub-sectors such as waste disposal and electricity generation.

Figure 6:

Sub-sector inventory for direct and indirect emissions calculated by SCATTER



Please note: Fugitive emissions refer to emissions lost due to leakages that occur when extracting, processing and transporting fossil fuels.

District emissions

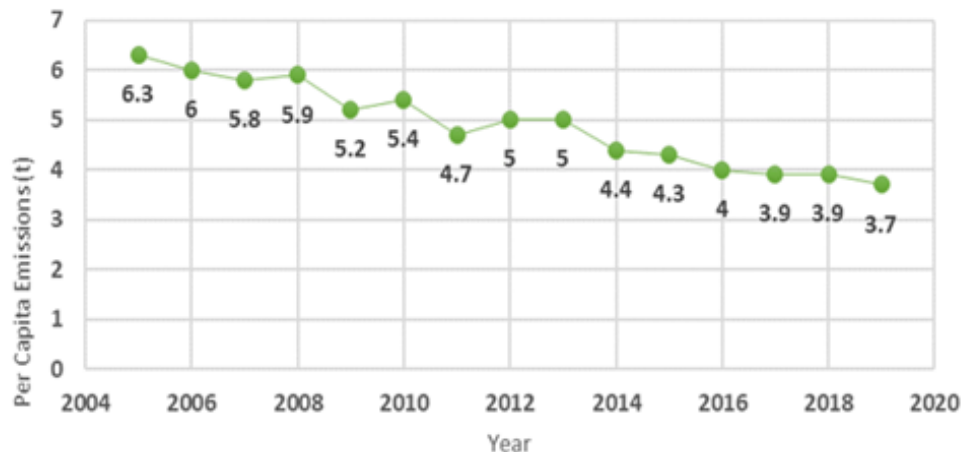
The SCATTER inventory shows that the biggest contributors to carbon emissions are:

- Residential buildings (35.7%)
- On road transport (16.5%)
- Industrial buildings and facilities (13.1%)

Mansfield's baseline:

Mansfield's emissions will be measured against a 2005 baseline, as this was the first reporting year by the Government's Department for Business, Energy and Industrial Strategy (BEIS). As shown in the chart below, the total emissions in Mansfield have declined steadily over the past 15 years, by over 40% which is in line with national trends.

Figure 7:



Source: Department for Business, Energy and Industrial Strategy (BEIS), 2020, UK local authority and regional carbon dioxide emissions national statistics: 2005 to 2019.

Carbon neutral pathway pathways:

This strategy looks at two possible future emissions pathways up to 2050, as modelled by the SCATTER pathways tool.



Business as usual (BAU) assumes minimal action beyond current, national policy (where sufficiently defined by sector or measure) and nationally led decarbonisation of the electricity grid.

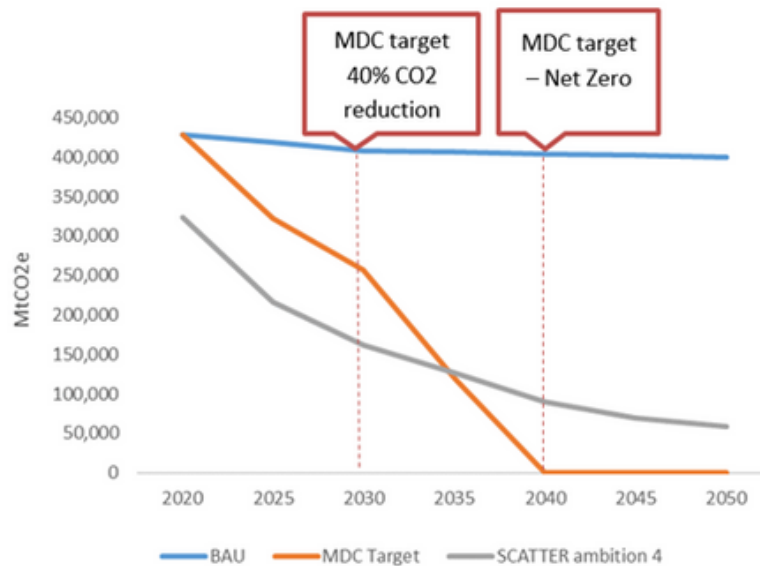


Science based budget is based on climate science rather than tangible energy supply and demand measures used in SCATTER. This pathway is one way of allocating a finite carbon budget. Please refer to the work performed by the Tyndall Centre for Climate Change Research for further details.



District emissions

The graph below shows Mansfield's trajectory for emissions reduction for business as usual (BAU) with the grey line showing the SCATTER trajectory figures based on a set of ambitious level 4 scenarios:



Source: BAU based on SCATTER trajectory figures

Mansfield's carbon budget:

The Tyndall Carbon Budget Tool presents climate change targets for UK local authority areas that are based on the commitments in the United Nations Paris Agreement, informed by the latest science on climate change and defined by science based carbon budget setting.

The results of the Tyndall trajectory shows that for Mansfield to make its fair contribution to delivering the Paris Agreement's commitment to staying "well below 2°C and pursuing 1.5°C" global temperature rise, then an immediate and rapid programme of decarbonisation is needed.

At 2017 CO₂ emission levels, Mansfield will exceed the recommended budget available within 6 years from 2020. To stay within the recommended carbon budget Mansfield will, from 2020 onwards, need to achieve average mitigation rates of CO₂ from energy of around -14% per year.

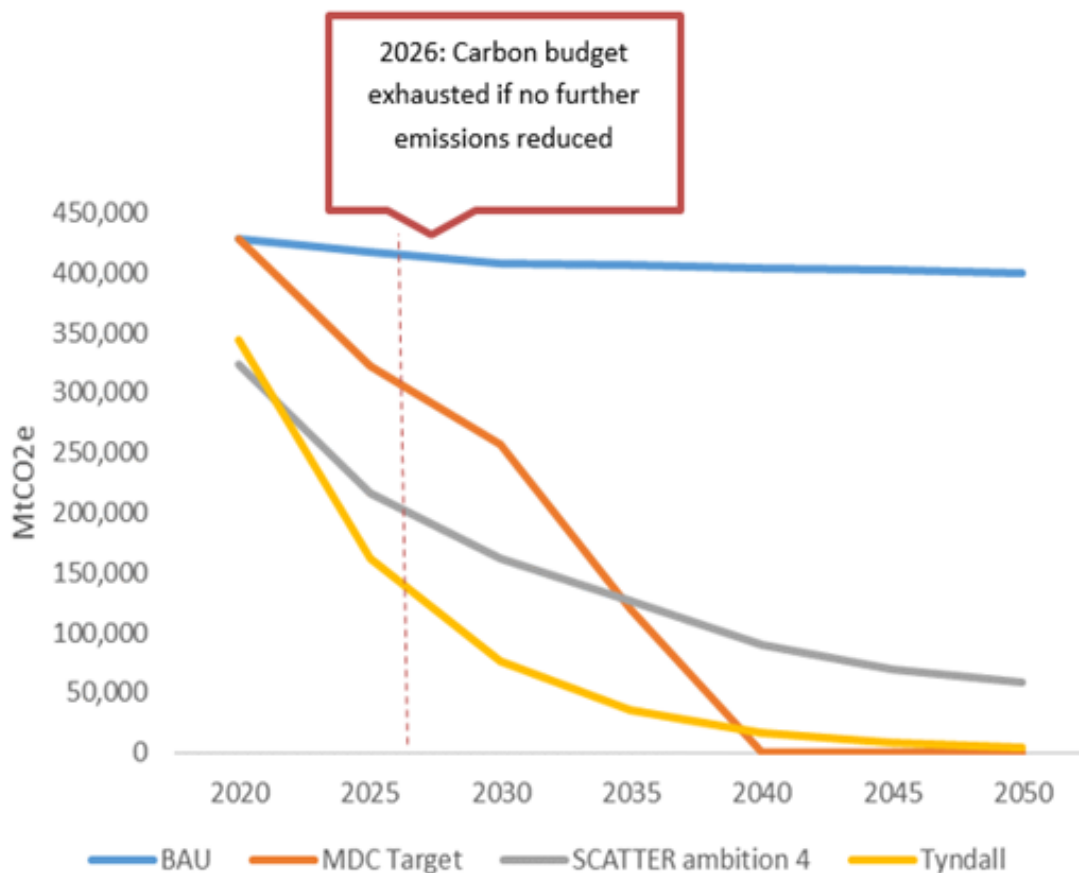


District emissions

For context, the relative change in CO₂ emissions from energy compared to a 2015 Paris Agreement reference year are shown in the table below.

Year	% Reduction
2020	19.7%
2025	62.3%
2030	82.3%
2035	91.7%
2040	96.1%
2045	98.2%
2050	99.1%

The Tyndall trajectory in yellow (below) relates to reductions based on a science-based target and carbon budget, with the aim to limit global temperature increase to well below 2°C.



Organisational emissions

To ensure we meet our ambition to achieve a net zero and carbon resilient council by 2040, we need to understand our current levels of organisational emissions.

Whilst some work has been undertaken to assess the recent level of emissions from some of our council buildings and identified potential actions needed to reduce emissions from them, we recognise that more needs to be done to ensure we have the intelligence to assess and monitor carbon emissions across all council operations, estate and transport.

We will therefore work to assess our organisational emissions against the greenhouse gas (GHG) protocol accounting standard. In accordance with the international Greenhouse Gas Protocol, emissions are categorised into 'scopes' depending on how much control an organisation has over them (see overleaf.)

We are currently utilising the Carbon Accounting Tool which has been produced by Local Partnerships to help local authorities establish their baseline greenhouse gas emissions over a single reporting year. This tool provides a focus on Scope 1 and 2 emissions and is developing some Scope 3 data sets.

Once this work has been completed, it will provide a baseline on which to benchmark and monitor progress of our activities, ensuring we focus our resources and actions on the areas that will have the greatest impact in achieving our ambition to becoming a carbon zero and carbon resilient council.



Organisational emissions

Table 1: GHG Scopes - Scopes and influence of carbon emissions

Scope	Lever of influence	Definition	Examples
1	Direct control	Carbon emissions from council sources that directly burn fossil fuels, such as gas boilers and combustion engines	Heating of council owned and managed assets, e.g. offices and leisure centres or mileage by council fleet
2	Direct control	Carbon emissions from the council's electricity usage	Power for council owned assets, e.g. offices, leisure centres and street lights
3	Indirect control	Carbon emissions from sources that the council does not directly control, but over which it has some responsibility and influence	Business mileage by staff, council housing stock and third party occupied buildings. Supply chains, community and voluntary, waste management, staff commuter journeys
Wider county emissions	Regulatory role enabling, engaging, partnership working, leadership and demonstration	Carbon emissions that are outside of the council's control. Some may be influenced through a council regulatory role, e.g. taxi licensing or planning policy	Emissions from new developments, residents and businesses



Themes and priorities



This section of the Climate Change Strategy focuses on the key areas (themes) that contribute to emissions and identifies where the council plans to focus our efforts in terms of reducing emissions and building resilience. It will also identify any existing partnership policies and strategies which council contribute towards its delivery.

Theme 1: Business and Economy

Priority:

To support and influence the transition to a green growth economy through leadership, innovation and technology.

MDC will work with partners to actively promote green growth, providing a clear direction for businesses and industry to develop and grow skills, products, new technologies and innovation, with a particular emphasis on digital, to support the transition to carbon neutrality and building business resilience.

Emissions focus:

Green technology
Renewable energy
Electrification
Business emissions
Digital

Adaptation focus:

Skills

Supporting Policies / Strategies:

D2N2 Recovery and Growth Strategy



Themes and priorities



Theme 2: Natural Environment

Priority:

To enhance and protect the natural environment to support carbon sequestration and climate resilience.

The council recognises that developing, protecting and enhancing the natural environment can help protect urban environments against the impacts of climate change by, amongst other things, improving surface drainage and helping to reduce the urban heat island effect. Green infrastructure can be designed to optimise the carbon carrying capacity of the natural environment, helping to reduce the district's emissions.

There is also the added benefit of directly and positively impacting both mental and physical health through providing access to recreation and relaxation opportunities.

Emissions focus:

Carbon sequestration
Landscaping/ habitat creation
Tree planting

Adaptation focus:

Flood management
Biodiversity
Habitat preservation

Supporting Policies / Strategies:

- Parks Strategy
- Green Infrastructure Study
- Open Space Assessment
- Mansfield Green Space Standard



Themes and priorities



Theme 3: Buildings and Infrastructure

Priority:

To enable and support the reduction in carbon emissions associated with the built environment including low carbon, low cost, healthy homes.

Mansfield's existing buildings, both commercial and residential, will need to be transformed if the district is to achieve its target to achieve carbon neutrality by 2040 and make them resilient to the potential impacts of a changing climate.

In addition to taking direct action on its own buildings (including new and existing residential dwellings to reduce carbon emissions and increase carbon resilience) MDC will use their wider levers of influence to support, enable and encourage a district-wide response.

Emissions focus:

Energy efficiency and reduction
Behaviour change
Fuel switching
New technology
Preservation of historic buildings
Utilities - energy reduction and decarbonisation

Adaptation focus:

Planning – new developments
Biodiversity and green infrastructure
Resilience to weather – flooding

Supporting Policies / Strategies:

- Adopted Local Plan 2013-2033
- Strategic Flood Risk Assessment
- Central Area Flood Risk Review
- Green Infrastructure Study



Themes and priorities



Theme 4: Waste and Circular Economy

Priority:

To enable and encourage innovative approaches to reduce waste and increase reuse, recycle and repair rates.

Reducing greenhouse gas emissions caused by the production of the goods and services which Mansfield's residents and businesses consume and by the management of the waste we produce requires a comprehensive approach. We need to adapt and reduce our current consumption patterns, particularly our consumption of carbon-intensive products and activities and to re-use and repair items we already have rather than replace them.

The council will work with the government and other relevant partners to actively drive a reduction in the waste generated and promote a circular economy approach across all parts of society - from household waste to commercial.

This will be delivered through increased producer and consumer responsibility and through behaviour insights, education, technology, and innovation.

Emissions focus:

Disposal
Waste prevention
Reuse / recycle

Adaptation focus:

Resilient waste system

Supporting Policies / Strategies:

- Waste Strategy (in development)



Themes and priorities



Theme 5: Energy Generation

Priority:

To enable and support renewable energy generation with a focus on low carbon energy options to residents and businesses.

In addition to taking direct action, MDC will work with local partners and communities to actively promote and enable the generation of local, renewable, resilient energy which would stimulate and support green growth in Mansfield, maximising the use of technology and innovation through a range of initiatives.

Emissions focus:

Renewable energy
Decarbonisation
New technology

Adaptation focus:

Resilient energy systems

Supporting Policies / Strategies:

- Adopted Local Plan 2013-2033
- Low Carbon Energy opportunities and heat mapping for local planning areas across the East Midlands



Themes and priorities



Theme 6: Travel and transport

Priority:

To enable and support the reduction in transport related carbon emissions focusing on the development of an active transport system.

In addition to taking direct action through its own operation to reduce employee travel and introduce a more fuel efficient fleet, MDC will work with partners to develop a more holistic approach for communities and places that ultimately reduces the need to travel, increases the uptake of walking, cycling and public transport, alongside supporting and promoting the electrification agenda.

Emissions focus:

Active travel
Travel planning
Electrification

Adaptation focus:

Network / infrastructure resilience - flooding

Supporting Policies / Strategies:

- Vehicle Replacement Programme / Greening the fleet
- Nottinghamshire Local Transport Plan 2011-2025



Themes and priorities



Theme 7: Carbon Neutral Council

Priority:

Achieve a net zero carbon council that leads by example in promoting sustainable practices across our operations, estate and vehicles.

The council will set out in its revised action plan, a clear pathway to achieving carbon neutrality by 2040 across the 3 scopes. This approach will drive action and leadership on the emissions for which the council has direct control, moving towards a more influencing and enabling role within the wider Mansfield area.

Emissions focus:

Scope 1, 2, 3

Adaptation focus:

Operational resilience

Supporting Policies / Strategies:

- Business Continuity Plans
- Procurement Strategy
- Making Mansfield – Growth Theme Action Plan

Partnerships

There are currently a number of public sector officer working groups that meet to share information on actions being undertaken on climate change and sustainability best practice and to collaborate on joint projects and initiatives, including:



Local Authority Energy Partnership (LAEP).



Nottinghamshire Environmental Strategy Group.



Nottinghamshire Carbon Neutral Officers Group.

The public sector is one aspect of partnership working that is needed to successfully tackle climate change. It is also extremely critical that we work in conjunction with expert organisations, businesses and other stakeholders, including:

District Network Operators (DNO) - Both the gas and electric network operators are responsible for maintaining the gas and electricity grids, ensuring the provision of energy to the Mansfield area. These DNOs have their own emission reduction strategies and targets to achieve, which include actions such as green gas (hydrogen) injection into the gas grid, battery storage and wider encouragement of renewables.

Association for Public Service Excellence (APSE) - APSE run a bespoke Local Authority Energy Collaboration which is a partnership developed by their member authorities looking to leverage and maximise the opportunities afforded to local authorities by working together on a national scale in the green energy agenda. Mansfield District Council aim to work closely with APSE to ensure best practise can be identified and opportunities captured.

Mansfield Community and Voluntary Service (MCVS) - An infrastructure organisation that has been supporting the community and voluntary sector in Mansfield for over 40 years. MDC will continue to work closely with MCVS to identify, support and engage with the diverse communities across our district.

The council will maximise opportunities offered by these existing networks and partnerships to develop best practice, policies, projects, and initiatives to support, enable, and stimulate the delivery of action on the ground.



Funding

MDC recognises the need for further investment if we are to deliver against our ambitions for climate change as the cost of not doing so would be far greater.

Given the financial pressures placed on local government, it is crucial that MDC think about more innovative and collaborative ways to finance its activities, taking advantage of external investment and funding where available.

MDC will also work with and support businesses, communities and individuals to identify any available funding that they can access directly to finance climate activities.



Communication and engagement

An essential element to support the aims and ambition of this strategy will be a comprehensive communications and engagement plan. The far-reaching actions and activities required to deliver the ambitions and priorities are beyond the scope of Mansfield District Council alone; partner organisations will be required to 'buy in' as well as needing ownership from businesses, residents and communities in Mansfield.

The communications and engagement plan will have four key areas of focus:

- 1 Messaging and promotion
- 2 Community engagement
- 3 Lobbying and influencing the UK Government and policy
- 4 Influencing behaviour change.

By working with those closest to communities, there is an opportunity to develop and deliver actions that will have the most impact and lasting benefit for those areas, whilst reducing inequalities such as fuel poverty through the use of local initiatives.

This is also an opportunity to encourage local communities and groups to come together and share ideas, best practice and to collaborate on schemes and projects to maximise utility and gain economies of scale. An effective communications plan can empower people, helping them become invested in the issues and, as a result, seeing themselves as part of the solution, not part of the problem.

Digital communications:

An online presence (dedicated webpage) will be the centrepiece of communications and engagement for this plan and act as a 'hub' for information about what Mansfield is doing regarding carbon neutrality and tackling the impacts of climate change.

The webpage will include case studies, progress updates, toolkits for individuals and businesses plus information on how to get involved (such as online surveys and resource packs for schools and other audiences).

We will utilise our associated social media channels to inform and engage too.



Governance and accountability

A Climate Change and Resilience group (CCRG) will be set up to steer and drive the emission reductions required and to build carbon resilience. Members will include:

Carbon Change and Resilience Group

Officer role



Cabinet sponsor	Portfolio holder for Regeneration
Group chair	Martyn Saxton, Head of Planning and Regeneration
Subject matter specialist	Sustainability and Climate Change Officer
Project support	Jeanette, Maples, Policy and Information Manager (BTU)
Finance	Matt Hemsley, Group Accountant
Housing	Phil Lord, Private Sector Housing Manager Craig Tinsley, Repairs and Asset Manager
Communications	Helen Sisson, Marketing and Communications Manager
ICT	Steve Nowell, ICT Manager
Property and assets	Philip Colledge, Property Services Manager
Fleet	George Farrell, Fleet Manager
Planning	Katie Mills, Planning Policy Team Leader
Procurement	Adrian Pullen, Quality Assurance Manager
Environmental Health	Sally Dilks, Environmental Protection Team Leader



Governance and accountability

It is expected that carbon management will become the responsibility of every employee within MDC. This will be essential if the target to reduce carbon emissions and make Mansfield carbon neutral by 2040 is to be realised.

Other actions to ensure that carbon management becomes the responsibility of everyone within the organisation include:

-  As part of the transformation programme we will recognise carbon consideration as a key element of the two Transformation Strategy themes: Improvement and Change and Commercialism and the two cross cutting themes: People First and Finance and Resources.
-  Each service will ensure that the carbon consideration is embedded in the service planning process to become part of everyday council planning, operation and delivery.

Monitoring and evaluation

The CCRG will be responsible for evaluating progress and where appropriate, revising the strategy and delivery plan so it remains current. They will be supported by the Planning Policy team who will use the Place Based Carbon Calculator tool to identify the carbon emission hot spots within the organisation and monitor progress against targets.

The SCATTER tool will also be used to build a detailed inventory of the district's annual greenhouse gas emissions in order to identify the largest emission sources and monitor progress against targets.

Figures on greenhouse gas emission reductions as an organisation and district will be included as part of the council's Annual Monitoring Report under the climate heading.

The CCRG will also approve and publish an annual report to all stakeholders on the council's progress against the ambitions, priorities and targets.





For more information, please contact:

Martyn Saxton
Head of Planning and Regeneration
Mansfield District Council

saxtonm@mansfield.gov.uk
01623 463024

www.mansfield.gov.uk/climatechange



Mansfield
District Council