

Nottingham County  
Council and Partners

---

**Northern Sub-Region  
Employment Land  
Review**

---

Appendix L

Nottingham County  
Council and Partners

---

**Northern Sub-Region  
Employment Land  
Review**

---

Appendix L

March 2008

**Ove Arup & Partners Ltd**  
St James's Buildings,  
Oxford Street,  
Manchester M1 6EL  
Tel +44 (0)161 228 2331 Fax +44 (0)161 236 1057  
[www.arup.com](http://www.arup.com)

This report takes into account the  
particular instructions and requirements  
of our client.

It is not intended for and should not be  
relied upon by any third party and no  
responsibility is undertaken to any third  
party

Job number 122924



Job title	Northern Sub-Region Employment Land Review	Job number
		122924

Document title	Appendix L	File reference
----------------	------------	----------------

Document ref

Revision	Date	Filename	Appendix L.doc		
Draft 1	13/03/08	Description	First draft		
			Prepared by	Checked by	Approved by
		Name	Ali Parker	Ali Parker	Jane Healey Brown
		Signature			
Issue	13/03/08	Filename	Appendix L.doc		
		Description	Issue		
			Prepared by	Checked by	Approved by
		Name	Ali Parker	Ali Parker	Jane Healey Brown
		Signature			
		Filename			
		Description			
			Prepared by	Checked by	Approved by
		Name			
		Signature			
		Filename			
		Description			
			Prepared by	Checked by	Approved by
		Name			
		Signature			
		Filename			
		Description			
			Prepared by	Checked by	Approved by
		Name			
		Signature			

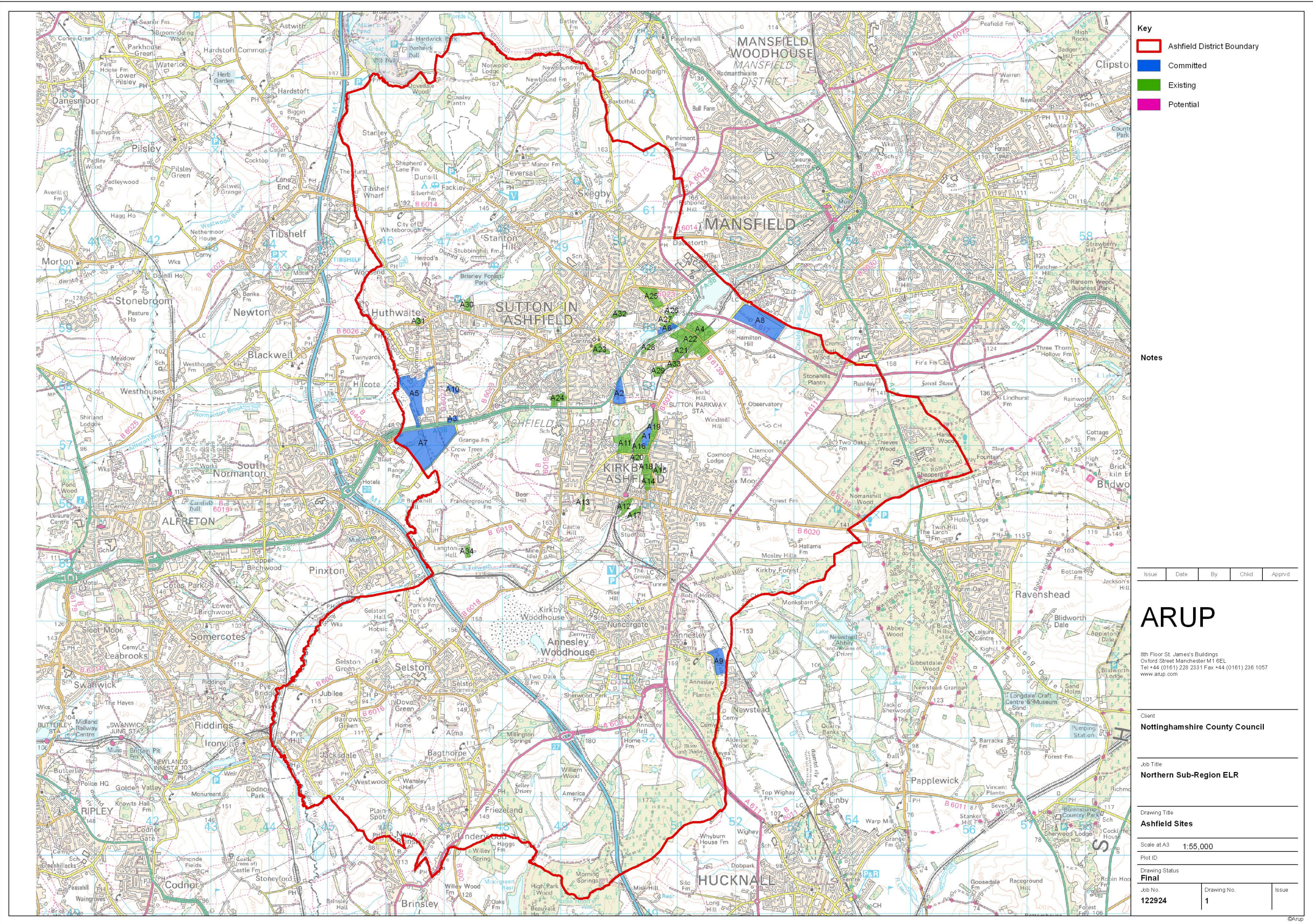
Issue Document Verification with Document







L1 Ashfield Sites

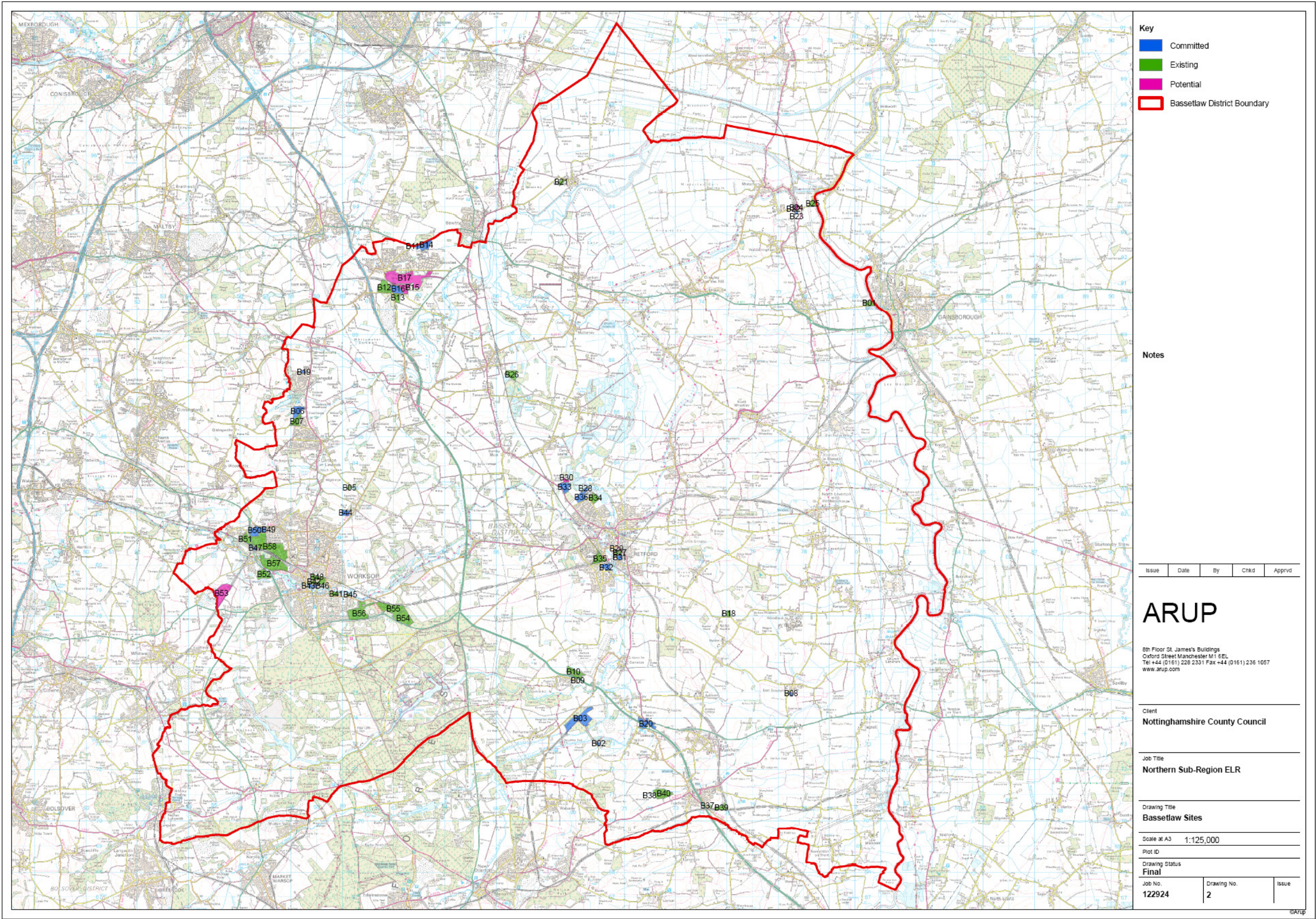








L2 Bassetlaw Sites

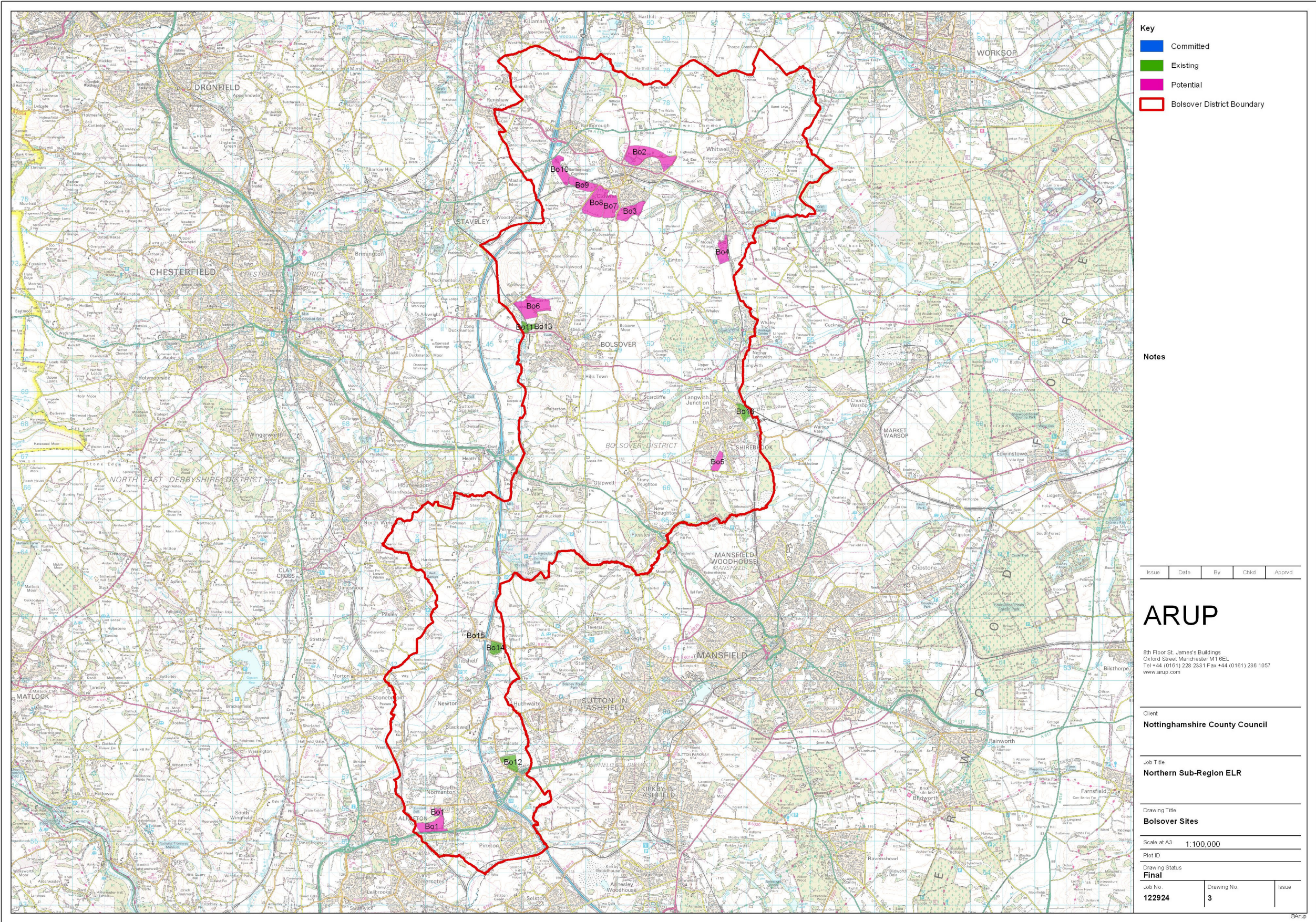








L3 Bolsover Sites

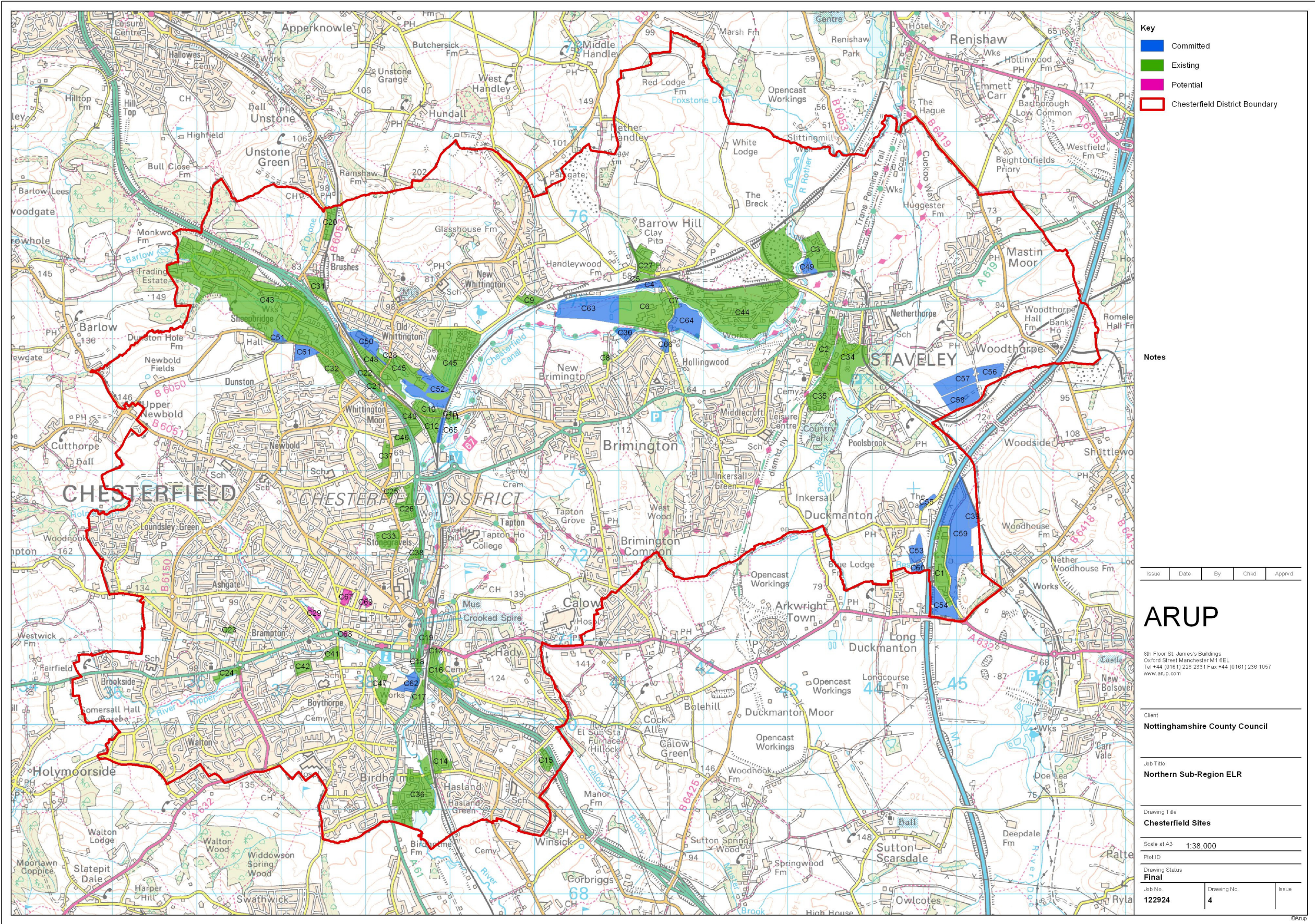








L4 Chesterfield Sites

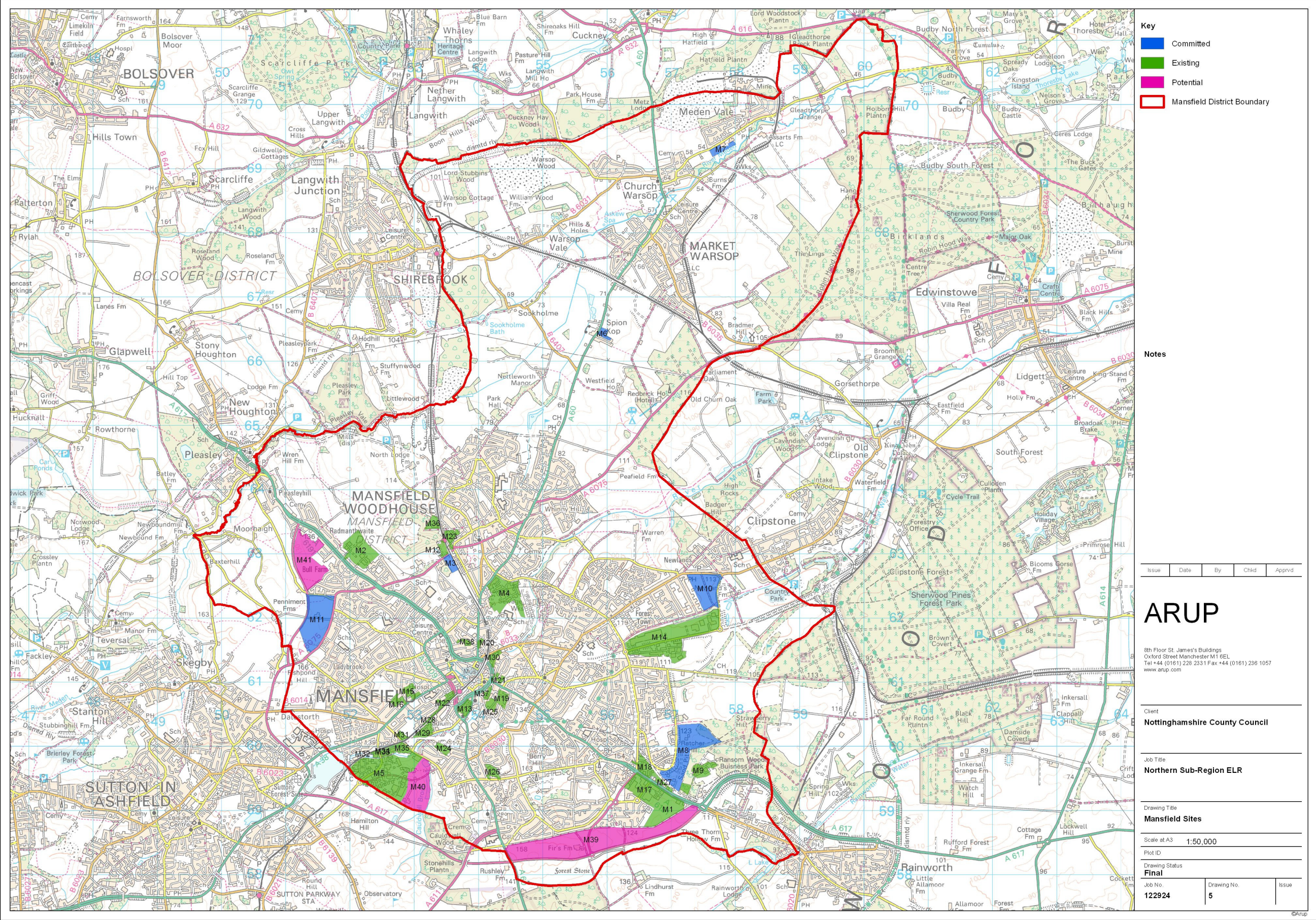








L5 Mansfield Sites

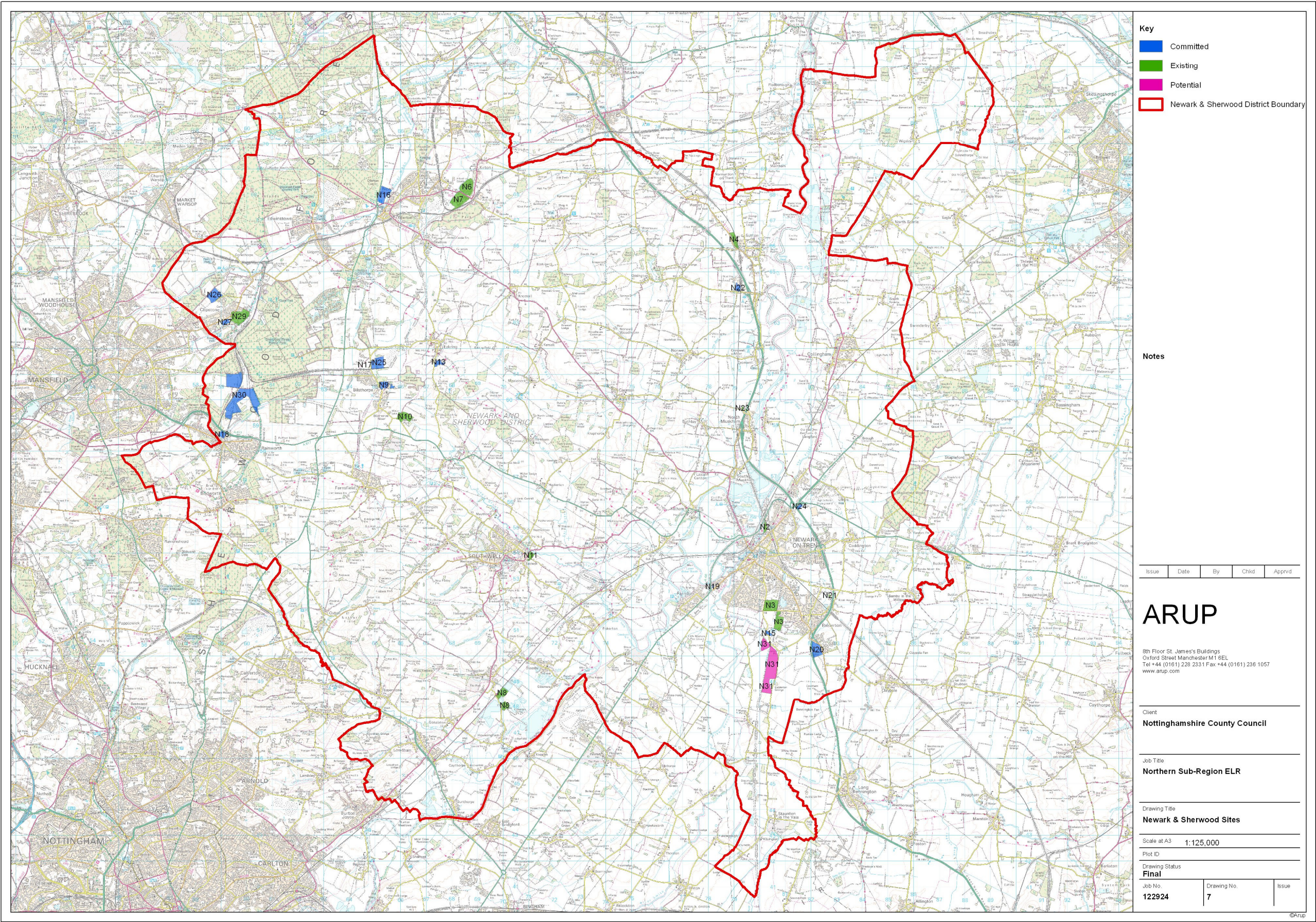








L6 Newark and Sherwood Sites









L7 North East Derbyshire Sites

